



INSTALLATION INSTRUCTIONS

Part Number: TB-1212

This filter fits: SEE CATALOG FOR CURRENT APPLICATIONS

* FREE K&N® decal To register your warranty, please see us online at knfilters.com/register. FREE K&N® decal *

Congratulations, you have purchased the finest air filter that money can buy. With proper care, this filter will last 1 million miles or more. This filter can be used in a stock machine, with no modifications required. If any engine modifications have been made tuning/jetting adjustments may be required. There are special installation instructions, so please follow the procedures outlined below to ensure the K&N Filtercharger® seals properly.

INSTALLATION:

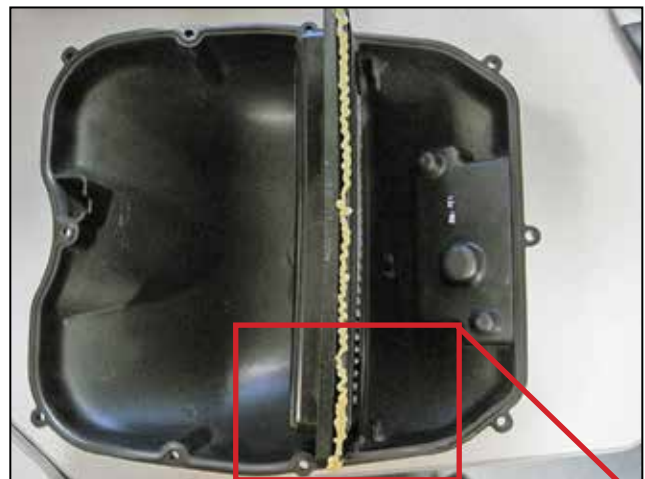
1. Remove the stock air filter.
2. Clean the inside of the air box and any sealing surfaces.
3. Using the supplied grease, run a bead around the perimeter of the filter. Fig. 1
4. With the grease applied, insert the K&N® air filter into the air box lid. Make sure the filter is pushed all the way into the sealing groove of the air box lid. Fig. 2
5. Once the filter is installed into the air box lid, install lid and filter onto the air box base.
NOTE: During installation into the base of the air box, make sure the filter slides into the sealing groove.
6. Re-install air box screws, make sure each is tightened.

THESE INSTRUCTIONS MUST BE FOLLOWED EVERY TIME THE FILTER IS SERVICED, OTHERWISE THE FILTER MAY NOT SEAL, AND DAMAGE TO THE ENGINE COULD RESULT.

Fig.1



Fig.2



detail of sealing groove