



INSTALLATION INSTRUCTIONS

Part Number YA-7006

This filter fits: SEE CATALOG FOR CURRENT APPLICATIONS

Congratulations, you have purchased the finest air filter that money can buy. With proper care, this filter can last many seasons. This filter can be used in a stock machine, with no modifications required. If any engine modifications have been made tuning/jetting adjustments may be required. There are special installation instructions, so please follow the procedures outlined below to ensure the K&N Filtercharger® seals properly.

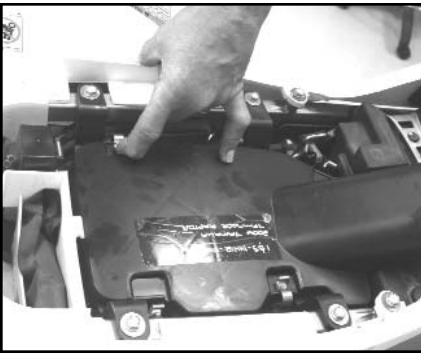
INSTALLATION



1. Lift up on the seat release.



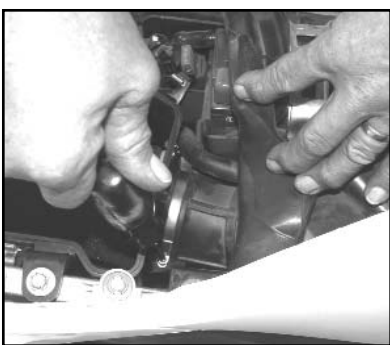
2. Remove the seat.



3. Unclip the four air box lid hooks.



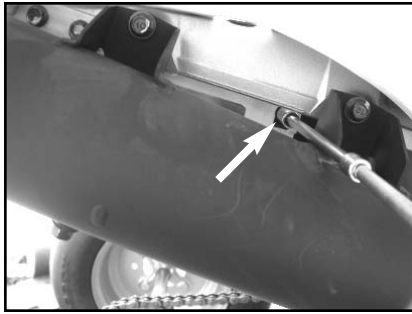
4. Remove the air box lid.



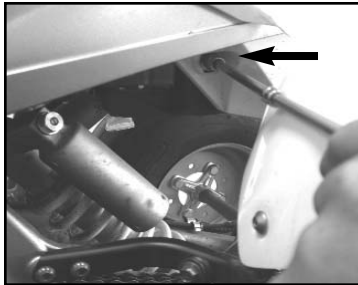
5. Loosen the clamp that goes from the air intake tube to the air filter holder in the air box.



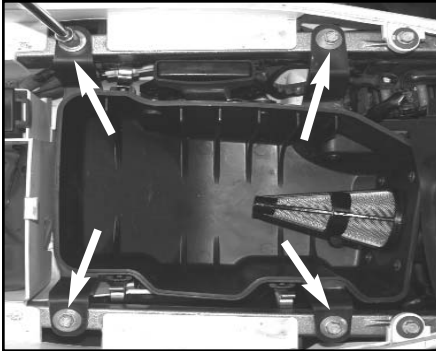
6. Remove the stock wing bolt then remove the stock air filter.



7. Remove the bolt that goes into the side of the air box (exhaust side).



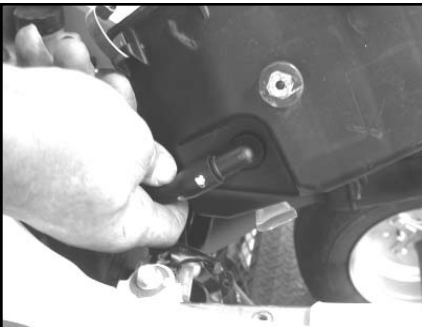
8. Remove the bolt that goes into the air box (left side).



9. Remove the four air box bolts.

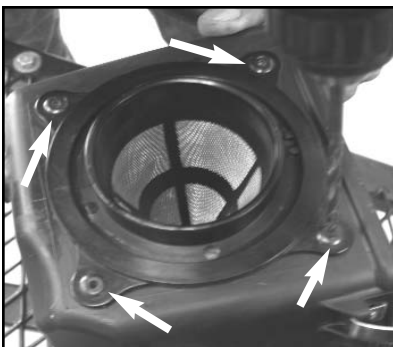


10. Remove the Engine Control Unit Assembly band.

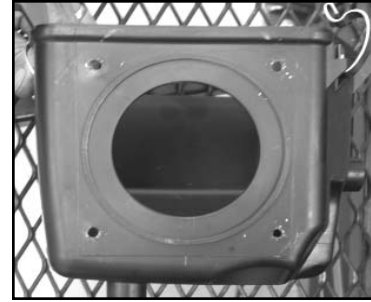


11. Lift the air box and unplug the crankcase breather tube from the side of the air box.

12. Remove the air box from the ATV.



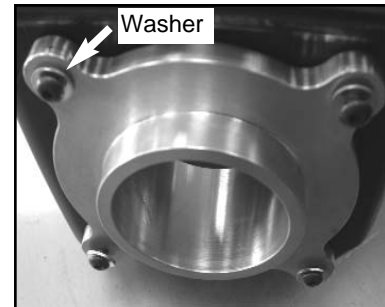
13. Drill out the four blind rivets from the air filter holder. **Note:** Do not use a drill bit larger than 7/32". Be careful so you do not elongate the air box holes.



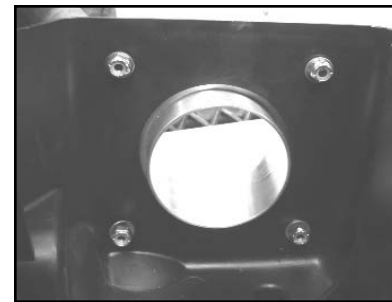
14. Remove the air filter holder from the air box.



15. Install the provided adapter into the air box. Make sure the holes line up.



16. Install the four provided buttonhead bolts and four washers on the outside of the air box. **Note:** The washers will go in between the bolts and the adapter.



17. Install the four provided nuts and four washers on the inside of the air box.

18. Completely tighten the nuts and bolts.

19. Install the provided clamp onto the flange of the K&N Filtercharger®. Make sure the clamp is loose.



20. Install the K&N Filtercharger® onto the adapter. Securely tighten the clamp.

21. Reinstall the air box going in reverse order of the instructions (steps 11-7 and 5-1).

Note: When reconnecting the air intake tube (step 5) onto the adapter, make sure it is completely seated and the clamp is securely tightened.

Available to purchase separately
Precharger Wrap; RU-0520PK